

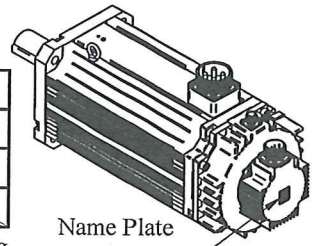
Model: JSMA-PIH110A7KB

No.	Item	Symbol	Unit	Specification	No.	Item	Symbol	Unit	Specification
1	Drive	-	-	3 φ 220VAC	13	Rotor Inertia	J-M	kg-cm ²	155.3±10%
2	Cooling Method	-	-	Totally Enclosed	14	Rated Power Rate	Q-R	Kw/s	315.52
3	Exciting Method	-	-	Permanent Magnet	15	Resistance	Ra	Ω	0.07±10%/2 φ
4	Resolution	-	-	17 bit INC	16	Inductance	L	mH	2±10%/2 φ
5	Rated Output	P-R	KW	11	17	Mech. Time Constant	Tm	ms	0.78±10%
6	Rated Torque	T-R	N-m	70	18	Elect. Time Constant	Te	ms	28.6±10%
7	Max. Torque	T-max	N-m	175	19	Insulation Class	-	-	Class F
8	Rated Speed	N-R	rpm	1500	20	Operation Temp.	T	°C	0~40
9	Rated Current	I-R	A	51.0	21	Operation Humd.	RH	%	<80
10	Max. Current	I-max	A	127.5	22	Storage Temp.	T	°C	-20°~60°
11	Torque Constant	Kt	N-m/A	1.45±10%	23	Storage Humd.	RH	%	<80
12	Ke constant	Ke	V/Krpm	87.6±10%/2 φ	24	Weight	W	kgw	51

Pin	Signal
B	Vcc
I	Gnd
A	
C	
H	SD+
D	SD-
G	
E	
F	FG

PIN	Signal
A	U
B	V
C	W
D	FG

PIN	Signal
A	0
B	24V
C	

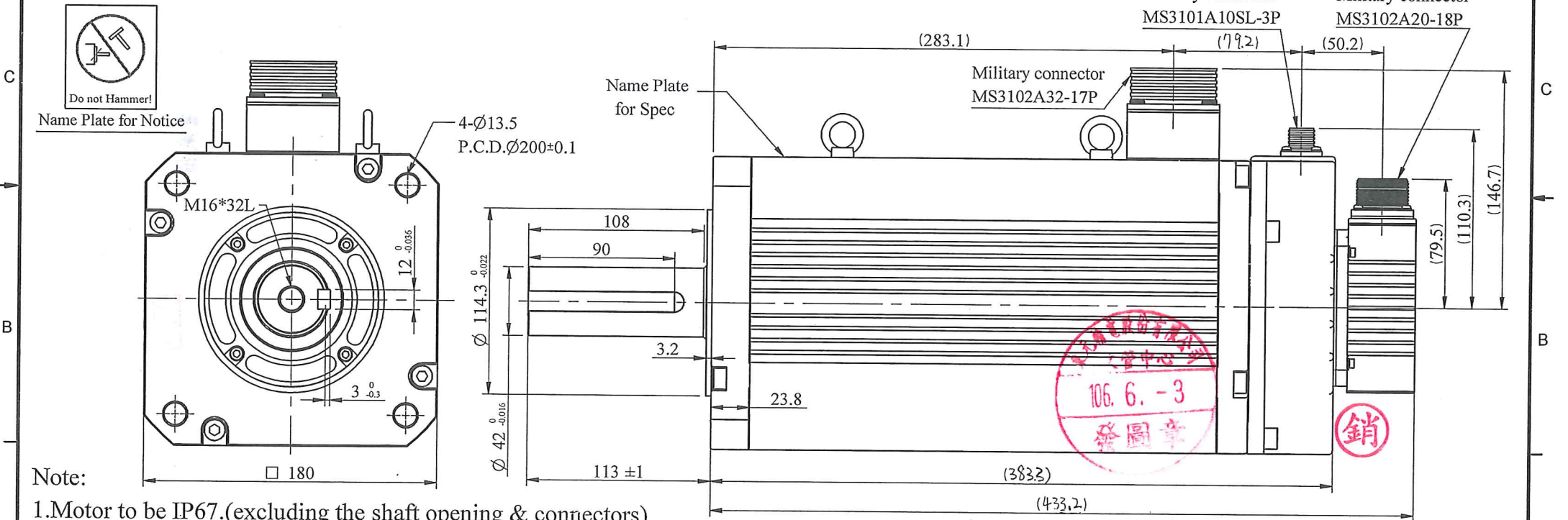


Name Plate for Notice

Encoder Wiring

Motor Wiring

Brake Wiring



- Note:
- 1.Motor to be IP67.(excluding the shaft opening & connectors)
 - 2.The detail of Name plate for Spec. refers to the file DC-JXE-002.

STANDARD TOLERANCE		APVD	SCALE	UNIT	NAME
X	±0.5	<i>ZS</i>	3/10	m m	Servo Motor Outline Drawing
.X	±0.2	<i>Michelle</i>	3RD .A.P		JSMA-PIH110A7KB
.XX	±0.05				
ANGLE	±30'				
MATERIAL	REV	DESCRIPTION	SIGNATURE	DATE	SIGNATURE



Dept. Design DWG.NO. D01B18113H3B7AD01